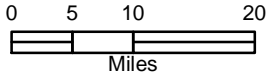
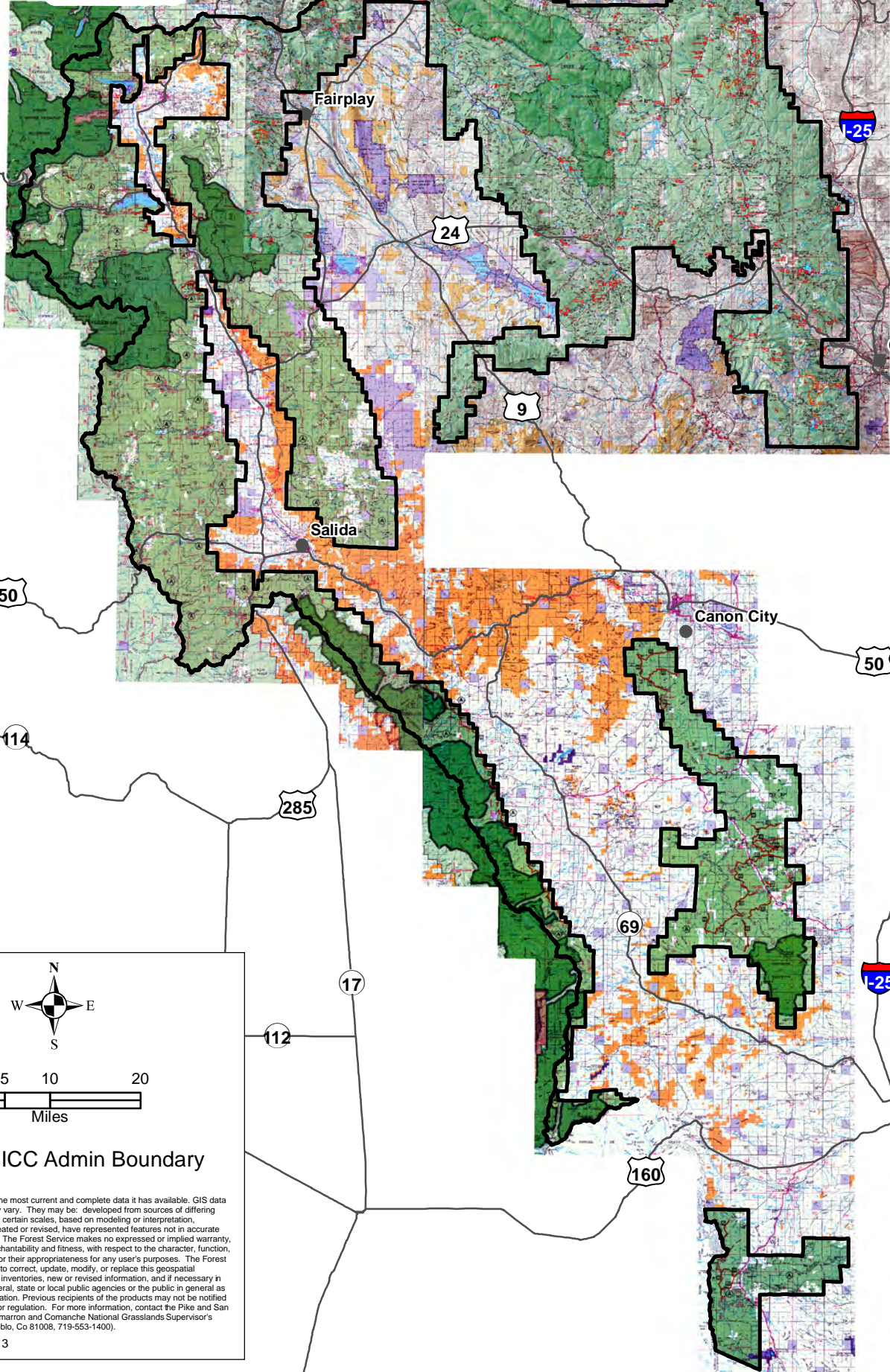



**Pike & San Isabel National Forests
Stage 1 Fire Restrictions
Order # PSICC-2013-02
Exhibit A**



 PSICC Admin Boundary

Disclaimer:
The Forest Service uses the most current and complete data it has available. GIS data and product accuracy may vary. They may be developed from sources of differing accuracy, accurate only at certain scales, based on modeling or interpretation, incomplete while being created or revised, have represented features not in accurate geographic locations, etc. The Forest Service makes no expressed or implied warranty, including warranty of merchantability and fitness, with respect to the character, function, or capabilities of the data or their appropriateness for any user's purposes. The Forest Service reserves the right to correct, update, modify, or replace this geospatial information based on new inventories, new or revised information, and if necessary in conjunction with other federal, state or local public agencies or the public in general as required by policy or regulation. Previous recipients of the products may not be notified unless required by policy or regulation. For more information, contact the Pike and San Isabel National Forests/Cimarron and Comanche National Grasslands Supervisor's Office (2840 Kachina, Pueblo, Co 81008, 719-553-1400).

M. Purnell 6/12/2013